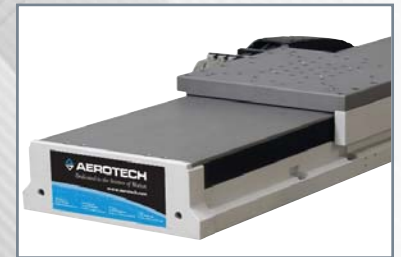




# Solutions for the Intraocular and Contact Lens Industry



**A Clear Vision for the Future of  
IOL and Contact Lens Manufacturing**

[www.aerotech.com](http://www.aerotech.com)

*Dedicated to the Science of Motion*

**Aerotech Worldwide**  
United States • Germany • United Kingdom • Japan • China • Taiwan • France



# Your Process, O

## LensPRO Series

### Increasing Part Quality and System Accuracy

#### Good

##### LensPRO-100

- Passive isolation
- Mechanical bearing
- Spherical and Aspherical
- Based on ALS2200 series stages

Ideal solution for cost sensitive applications

#### Better

##### LensPRO-200

- Spherical, aspherical and toric profiles
- Air isolation
- Based on ALS5000CR series stages

Part quality that exceeds competitive air-bearing solutions

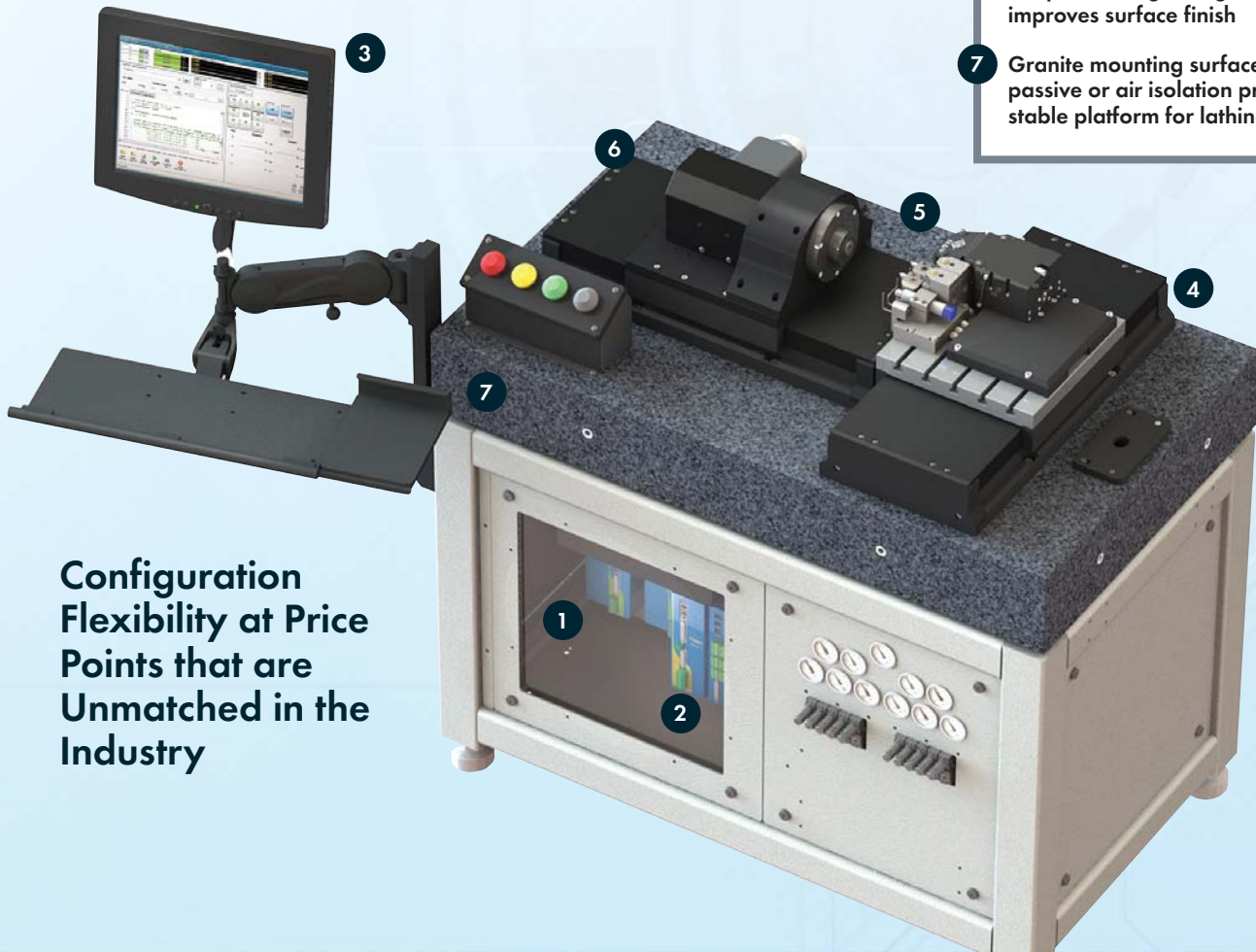
#### Best

##### LensPRO-300

- Air-bearing slides
- Spherical, aspherical, toric and diffractive profiles
- Air isolation
- Based on ABL1500 series stages

Part quality comparable to competitive hydrostatic bearings

- 1 Networked open control platform allows for easy expansion
- 2 Standard commercial PC technology running latest Windows® software
- 3 Lens profile manager software creates programs in easily editable G-code programs
- 4 T-slot tool mounting interface allows for flexible tool placement and addition of custom tooling
- 5 Toric milling/drilling spindle, LVDT and fixed tool posts support a wide range of lens geometries
- 6 Closed loop air-bearing spindle with unique bearing configuration greatly improves surface finish
- 7 Granite mounting surface with passive or air isolation provides a stable platform for lathing process



Configuration Flexibility at Price Points that are Unmatched in the Industry

# Our Components

## Component Solutions



### Good

#### ALS2200

- Smooth, reliable crossed-roller bearings capable of making lenses with minimal polishing times
- Compact size reduces machine footprint in space-constrained cleanroom environments
- The ideal stage solution for high volume, low-cost lens turning platforms



### Better

#### ALS5000CR

- High-precision crossed-roller bearing stage capable of producing polish-free surfaces
- Large tabletop easily accommodates multiple tools and measurement devices
- Larger stage cross-section provides adequate stiffness for toric lens profiling



### Best

#### ABL1500

- Air-bearing stage completely eliminates mechanical noise sources for the best possible lens quality
- Friction-free bearing allows for small step sizes making it the ideal platform for diffractive lens manufacturing
- The high accuracy linear encoder operating at picometer resolution minimizes profile errors when turning complex lens profiles



### Toric Lens Generator

- Oscillating tool post designed specifically for toric lens profile
- 4 mm of total travel has adequate travel for the most complex profiles
- Compact drive technology can be mounted inside the lathe machine base
- Non-proprietary, open programming language allows for complete customization of the lens surface profile
- Significant cost and space savings over competitive solutions



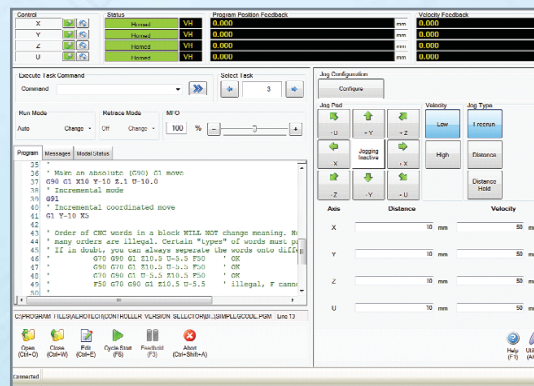
# Aerotech Automated Solutions

## Integrated Motion, PLC, Fieldbus, Data Acquisition



### Digital Automation Platform

- PC-based
- 1 to 32 axes of coordinated motion
- Up to 32 tasks
- RS-274 (G-code)
- Advanced features for demanding applications
- PWM or linear drives (up to 150 A)
- Scanner control for marking
- Tightly integrated laser functionality
- Retro-fit package for old controls
- Integrated PLC and Motion – MotionPAC



#### WORLD HEADQUARTERS

**Aerotech, Inc.:** 101 Zeta Drive, Pittsburgh, PA 15238 • Ph: 412-963-7470 • Fax: 412-963-7459 • Email: sales@aerotech.com

**Aerotech France:** BP 70043, 45702 Villemaendur Cedex, France Ph: +33-238970830 • Email: sales@aerotech.co.uk

**Aerotech Germany:** Südwestpark 90, 90449 Nürnberg, Germany • Ph: +49-911-9679370 • Fax: +49-911-96793720 • Email: sales@aerotechgmbh.de

**Aerotech United Kingdom:** Jupiter House, Calleva Park, Aldermaston, Berkshire, RG7 8NN, UK • Ph: +44-118-9409400 • Fax: +44-118-9409401 • Email: sales@aerotech.co.uk

**Aerotech China:** Unit 3328, 33/F, China Merchants Tower, 168 - 200 Connaught Road Central, Hong Kong • Ph: +852-3793-3488 • Email: saleschina@aerotech.com

**Aerotech Japan:** 17-25 1-chome, Kitahoncho Funabashi-shi, Chiba-ken, 273-0864, Japan • Ph: +81-47-489-1741 • Email: sales@aerotechkk.co.jp

**Aerotech Taiwan:** 1F No. 42 Lane 128, Jing Ye 1st Road, Zhongshan District, Taipei City, Taiwan R.O.C. (104) • Ph: +886-2-8502-6651 • Email: salestaiwan@aerotech.com